

## Neenah High School

1275 Tullar Road  
Neenah, WI 54956

### Driving South on Highway 41 (coming from Appleton, Green Bay, etc)

Take a right on the Winneconne/CR-JJ/114 exit. A Kohls Department store will be on the right side of the road. Turn left at the stop lights. This will be Tullar road. Go south on Tullar Road for about 1 mile. Neenah High School will be on the right side of the road.

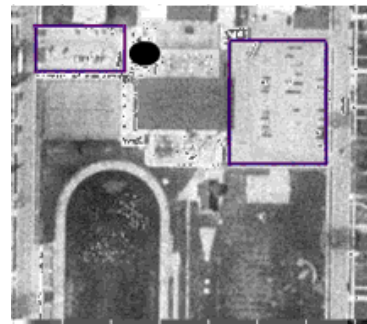
### Driving North on Highway 41 (coming from Oshkosh, Fond du Lac, Milwaukee, etc)

Take the Breezewood/Bell exit, and go left (west) for about a quarter of a mile. Turn right on Tullar Road, and go North several blocks. Neenah High School will be on the left side of the road.



## Shattuck Middle School

600 Elm Street  
Neenah, WI 54956



The parking lots are outlined in purple.

**Parking Directions:** The largest and main parking lot is on the east side of the building. There is also a smaller parking lot on the west side of the Shattuck central wing.

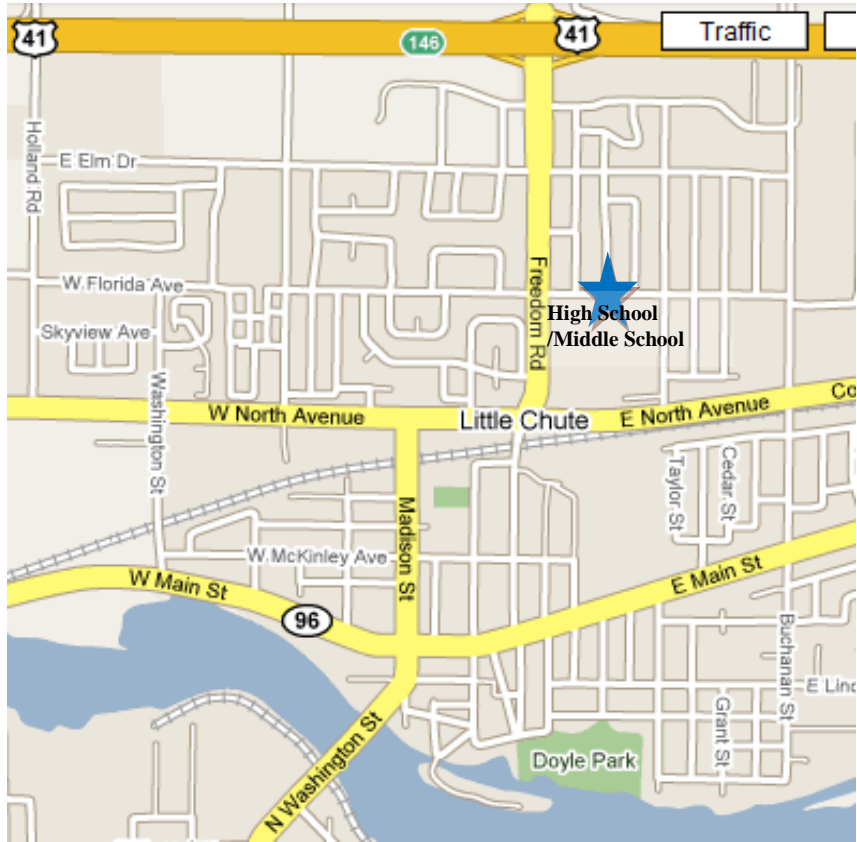
The black dot denotes the approximate location of the office. All visitors must initially check in to the office when they visit.



## Little Chute High School

1402 N. Freedom Road  
Little Chute, WI 54140

Directions to Little Chute High/Middle School: Take Hwy 41 to County Road N exit. Head south for approximately ½ mile. School will be on your left. Park in large parking lot and use entrance on North side of building where all of the large glass panels are located.



## Appleton East High School

2121 East Emmers Drive, Appleton, WI 54915

From **WI-441 N**

↗ Take the **County Hwy KK/Calumet St** exit - go 0.3 mi

↖ Keep **left** at the fork, follow signs for  
**Calumet St W/Appleton/County Rd KK W** - go 200 ft

↖ Turn **left** at **E Calumet St/County Rd KK** - go 0.6 mi

↗ Take the 3rd **right** onto **E John St** - go 0.5 mi

↖ Turn **left** at **E Emmers Dr**

Appleton East High School is on the left

From NEENAH HIGH SCHOOL **to:**

**SHATTUCK MIDDLE SCHOOL – NEENAH**

Take Tullar Rd left to Cecil St – turn right  
Stay on Cecil St ( 1.8mi ) until Reed ST – turn left  
Stay on Reed St for 3 to 4 blocks

**APPLETON EAST HIGH SCHOOL**

Tullar Rd north to Winneconne Ave ( .7mi ) turn right  
Take Winneconne to Hwy 41 ( .3mi ) – turn left on to Hwy 41 north  
Hwy 41 north to the Hwy 10 / 441 exit  
Take 441 to the Calumet St exit ( .7mi ) – turn left off the exit on to Calumet  
Stay on Calumet St ( 1mi ) to Schaeffer St – turn right

**LITTLE CHUTE HIGH SCHOOL**

Tullar Rd north to Winneconne Ave (Hwy 114) turn right  
Take Winneconne to Hwy 41 – turn left on to Hwy 41 north  
Hwy 41 north to the Little Chute exit (County N)  
Exit right – stay on Cty N ( approx 1 mi.)  
Little Chute HS on left side

From SHATTUCK MIDDLE SCHOOL (Neenah) to:

**NEENAH HIGH SCHOOL**

Turn right on to Reed St – 4blocks to Cecil St  
Turn right on to Cecil St (1.8mi ) to Tullar Rd – turn left  
Take Tullar Rd 3 to 4 blocks to Neenah High School

**APPLETON EAST HIGH SCHOOL**

Turn right on to Reed St – 4 blocks to Cecil St  
Stay on Cecil St (1.5mi) to Green Bay Rd – turn right (round-a-bout)  
Take Green Bay Rd to Winneconne Ave (.4mi)– turn left  
Exit on to 41 north  
Take 41 to the 441 exit – go right  
Stay on 441 ( .7mi ) to the Calumet St exit / down to Calumet – turn left  
Take Calumet St to Schaeffer (1mi ) turn right

**LITTLE CHUTE HIGH SCHOOL**

Turn right on to Reed St – 4 blocks to Cecil St  
Stay on Cecil St ( 1.5mi) to Green Bay Rd – turn right (round-a-bout)  
Take Green Bay Rd to Winneconne Ave ( .4mi )– turn left  
Exit on to 41 north  
Take 41 to 441 exit – go right  
Stay on 441 ( 10mi ) to Northland Ave (Cty OO ) turn right  
Stay on Northland Ave ( 1.9mi ) to Cty N  
High School on left side corner

From APPLETON EAST HIGH SCHOOL to:

**NEENAH HIGH SCHOOL**

Turn left on to Schaeffer St – take Schaeffer to Calumet St – turn left ( 1mi )  
 Take 441 exit right ( 7mi ) to 41 South ( Oshkosh )  
 Stay on 41 to Winneconne exit – stay right on Winneconne ( .3mi ) to Tullar Rd  
 Turn right on to Tullar Rd ( .7mi )  
 Neenah High School on right side

**SHATTUCK MIDDLE SCHOOL**

Turn left on to Schaeffer St – take Schaeffer to Calumet St – turn left ( 1mi )  
 Take 441 exit right ( 7mi ) to 41 South ( Oshkosh )  
 Stay on 41 to Winneconne exit – turn left on to Winneconne to Green Bay Rd  
 Turn right on to Green Bay Rd to Cecil St ( .4mi ) – turn left on to Cecil St  
 Stay on Cecil St ( 1.5mi ) to Reed St – turn left on to Reed St – 3 to 4 blocks  
 Shattuck school left side

**LITTLE CHUTE HIGH SCHOOL**

Turn left on to Schaeffer St – take Schaeffer to Calumet St – turn left ( 1mi )  
 Take 441 exit left (westbound lane) ( 3mi ) to Northland Ave ( Cty OO )  
 Exit right on to Northland – go 1.9mi  
 Little Chute High School is on left side corner

**From LITTLE CHUTE HIGH SCHOOL to:****NEENAH HIGH SCHOOL**

Turn right on to Cty N – stay on N to Hwy 41 – take southbound exit  
 Stay on 41 ( approx 16mi ) to Neenah – Winneconne /Hwy 114 exit  
 Exit right – stay right ( .3mi ) to Tullar Rd – turn left go .7mi  
 Neenah High School is on the right side

**SHATTUCK MIDDLE SCHOOL**

Turn right on to Cty N – stay on N to Hwy 41 – take southbound exit  
 Stay on 41 ( approx 16mi ) to Neenah – Winneconne / Hwy 114 exit  
 Exit right – turn left to Green Bay Rd – turn right on to Green Bay Rd  
 Take Green Bay Rd to Cecil St ( .4mi ) – turn left on to Cecil  
 Take Cecil St ( 1.5mi ) to Reed ST – turn left  
 Stay on Reed 3 to 4 blocks – Shattuck is on the left side

**APPLETON EAST HIGH SCHOOL**

Turn left on to Cty N – go 1 block to Northland Ave ( Cty OO ) – turn right  
 Stay on Northland Ave ( 1.9mi ) to Hwy 441 – exit left on to 441  
 Take 441 to the Calumet St exit ( 3mi ) exit right on to Calumet St  
 Take Calumet St to Schaeffer St ( 1mi ) turn right  
 Appleton East High School is on the right side